

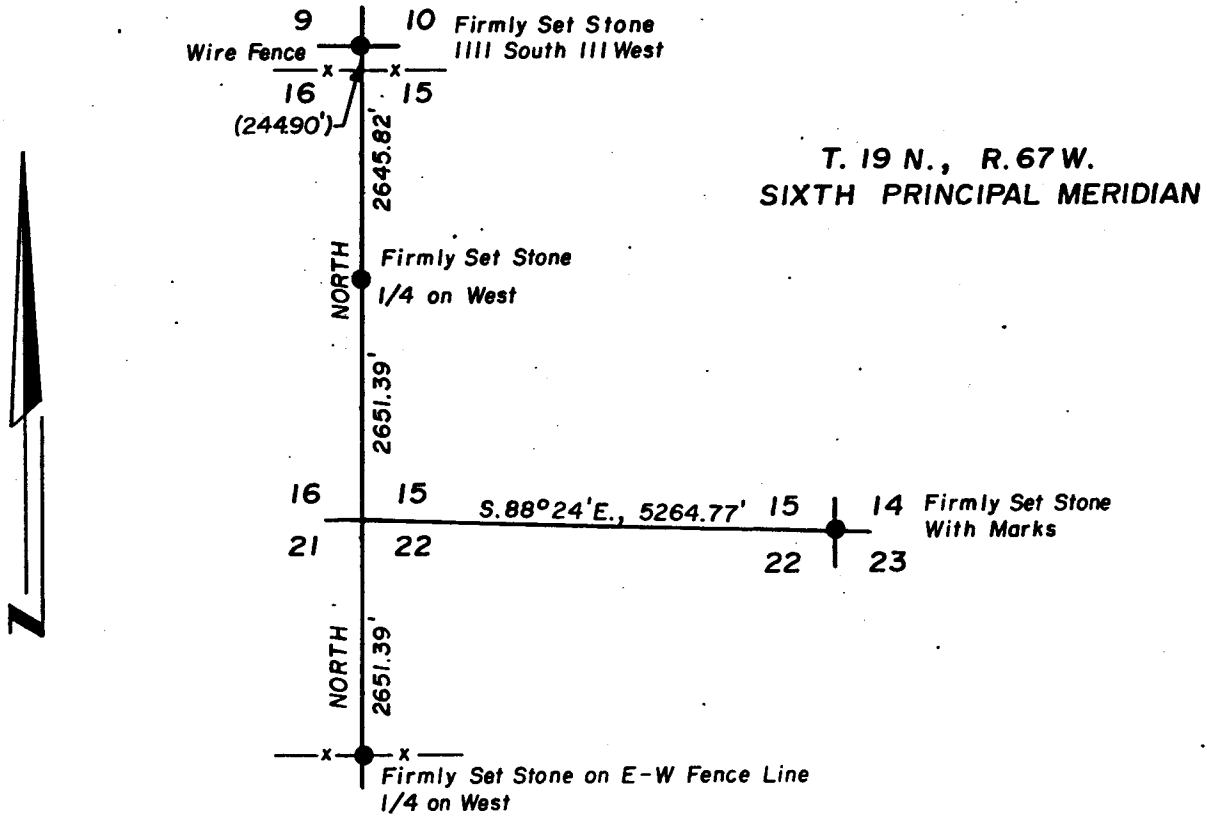
CERTIFIED LAND CORNER RECORDATION

DESCRIPTION OF CORNER EVIDENCE FOUND, AND ORIGINAL RECORD (If known)

Original Corner Stones

DESCRIPTION OF MONUMENT AND ACCESSORIES ESTABLISHED TO PERPETUATE THE ORIGINAL LOCATION OF THIS CORNER:

**SKETCH, WITH COURSE AND DISTANCE TO ADJACENT CORNER IF DETERMINED IN THIS SURVEY.
(May Sketch or Paste Reproduction on Reverse Side.)**



I, Bradley H. Clow certify that I have carefully performed or reviewed the work done on the diagrammed corner as reported on this recordation form and approve the same.

Bradley H. Clow 548 L.S.
Signature of Surveyor Registration No.

STATE OF WYOMING,
Office of Clerk and Recorder,
County of Laramie

708086

This "corner record" was filed for record on the day of JUL 26 1983, 19 , was noted on the cross-index plat and is assigned page No. , in book No.

Just C Whitehead *JB*
County Official

Cross Index No. _____	T. _____	R. _____	Mer. _____
_____	T. _____	R. _____	Mer. _____
_____	T. _____	R. _____	Mer. _____
_____	T. _____	R. _____	Mer. _____
_____	T. _____	R. _____	Mer. _____
_____	T. _____	R. _____	Mer. _____

J-13
L-13
P-13
N-17 *19-67*